



30 April 2021

The Rt Hon Grant Robertson
Racing Minister
Parliament Buildings
WELLINGTON

Dear Minister,

In response to our recent meetings and your letter dated 2 February 2021, to follow is our report in relation to the actions taken and actions ongoing to address the animal welfare recommendations made in the Hansen Report and our industry plan. The recommendations in the Hansen report required a dual approach, which involved the improvement to our data and record keeping and using this information to monitor and ensure the adherence to our social licence. GRNZ has focussed on two priority areas being race day injuries resulting in euthanasia, and the rehoming of all dogs that have retired from their racing career.

These priorities are supplemented by managing breeding numbers, inspection and audit of kennel facilities, record keeping and ongoing relationship building with our adoption agency partners.

There is a perception that some of these issues are “the tip of the iceberg” but the reality is that these issues are public only because this organisation has allowed a greater level of scrutiny and transparency than any other organisation that works with animals.

All of these initiatives have required operational improvements and increased resourcing. GRNZ would like to summarise our progress across these areas within the body of this letter and provide further detail in the appendices.

We are aware that we have not communicated broadly our progress on the Hansen Report as well as we could have, and this has resulted in some misconceptions that you may have heard since becoming Minister for Racing. I trust that this report gives you confidence that we take animal welfare extremely seriously.

Further we will, as requested, reinstate the quarterly reporting to you and the Associate Minister of Agriculture (Animal Welfare).

Structure and culture

With the appointment of a new Chief Executive to GRNZ in the second half of 2019, the organisation has been undergoing a significant organisational and personnel change. The

first action taken was to ensure that all GRNZ employees were and continue to be aware of the importance of our social licence, the importance of placing animal welfare at the top of our priorities and the expectations set out in the recommendations of the Hansen Report.

In order to ensure that all areas of the industry were focussed on the recommendations of the Hansen Report, and were responding to all of the reporting requirements and policies that had been developed, animal welfare has been embedded into the roles of all staff.

A new role of a Racing Operations and Welfare Manager was established. This was to ensure that there is strong communication and synergy with the clubs and our licensed persons. Approval for all race meetings licences and the nominating of dogs to race is facilitated by the Racing Operations and Welfare Manager. This change has enabled GRNZ to focus on the club management and the participants on the importance of welfare. It also means that all communications across the country are consistent, regular and underpinned with welfare as a priority and there is a more open and transparent flow of information between GRNZ and its stakeholders. The Racing Operations and Welfare Manager attends all welfare and integrity advisory groups in Australia and New Zealand and has regular contact with the Chief Vet and the Racing Integrity Unit.

We have also appointed a Rehoming Manager who oversees the entire rehoming program which includes three kennel facilities and their staff. This role includes managing the welfare and rehoming activities with the adoption agencies, vet practices and trainers.

This means that we have oversight of the welfare of our dogs prior to racing, during racing and on retirement.

Track monitoring

GRNZ has appointed an experienced Track Advisor responsible for overseeing the track curators with a mandate to improve track safety. A number of initial recommendations have already been identified and actioned, including the building of six track groomers, modifying the roll out of extended arm lures and establishing best practice schedules for track preparation and maintenance. Further recommendations will continue to be identified and actioned across all greyhound racing tracks.

Track Curator contracts for each racing club are in the process of being renegotiated to include an obligation for the Track Curator to prepare the track in line with the requirements of the GRNZ Track Advisor.

Where track surfaces are deemed unsafe to race on both GRNZ and the RIU are taking immediate action to either cancel racing prior to the meeting or in the case of damage during racing cancel immediately. Racing does not restart until the track condition has been approved as safe. The current season has demonstrated that GRNZ and RIU have enforced this action.

In relation to the Whanganui track, the latest update is the curator has been replaced and the Track Advisor is working closely with the new curator and the track is being regularly monitored by the RIU, the Racing Operations and Welfare Manager and the club.

Track improvements

GRNZ has engaged with a track and sand expert to assess the sand properties across the greyhound tracks. Sand is a critical factor in ensuring track injuries are minimised. As a result the recommendation to completely replace the racing surface at one track in order to reduce race day injuries is currently being implemented. GRNZ will maintain this initiative to continue to assess each of the track surfaces and take necessary action when recommended.

Racing Injuries

By the end of the 2019/20 racing season, race day injuries resulting in euthanasia were reduced to 34, down from 60 in both 2017/18 and 2018/19 (note Covid reduced the number of races by 13% compared to the previous season), but GRNZ want to eliminate euthanasia resulting from race day injuries.

To achieve this goal we investigated the introduction of an injury scheme, whereby GRNZ would cover the cost of treatment for race day injuries. This idea was put to a national meeting of race day vets where it met with unanimous approval. Since then GRNZ has worked with the stewards, trainers, veterinary clinics and rehoming kennels to design the appropriate protocols and systems to ensure the success of the program.

A pilot injury scheme was launched in January 2021 with GRNZ paying for both specialist treatment and rehabilitation. In the three months since the pilot started, race day injuries resulting in euthanasia have been all but eliminated. There was one race day injury resulting in euthanasia, and one other dog that could not be resuscitated at the end of routine surgery during that period. By comparison, in the season prior to the scheme starting, twenty-one dogs had been put down on race day this season prior to the scheme starting. GRNZ has decided to make this pilot part of a permanent nationwide practice and will continue to evolve it to ensure maximum ongoing effectiveness.

GRNZ will also continue its practice to voluntarily publish the Stewards' reports following each race meeting. These reports include any race injuries identified by the on-track veterinarians in order to maintain the high standard of transparency set by the industry, and to meet public expectation. We are conscious that this practice opens our industry up to scrutiny that no other sport or industry has. Many stories in the media come directly from this voluntary measure.

Welfare Advice

Following the Hansen Report, GRNZ voluntarily established an independent Welfare Committee, which is chaired by a retired veterinarian and government policy specialist. The original task of this committee was to assist in the development of policies and protocols in line with the Hansen Report recommendations. As identified in earlier reports to the Minister for Racing, most of this work has now been completed (see attached appendices of generated reports and policy actions).

Due to Covid and GRNZ's concerns in relation to the extra constraints in relation to both fiscal and training options for our trainers and owners. A feed subsidy support program was put in place to ensure all trainers could afford to feed their dogs during the lockdown.

This program proved to be highly successful and welcomed by many trainers who endured a 100% loss of income while no racing was permitted.

For the last 12 months a weekly conference call has been held with the Chair and Chief Vet of the Committee. The recent focus of the Animal Health and Welfare Committee has been on ensuring that animal welfare is embedded in the culture of the sport. The relationship with the Chair and Chief Vet means we are able to obtain up to date expert advice for the health and wellbeing of the dogs.

Topics discussed and then shared with the trainers and owners were related mainly to injury prevention, disease control and management of highly infectious and/or transmittable diseases. The Chair of the committee and the Chief vet are also currently working with a Massey University PhD student doing a research project in relation to greyhounds injuries. A further study in relation to parasites and eye infections in Greyhounds is in progress. Both these research projects are funded by GRNZ.

With the transition of the TAB and the independent structure of the Racing Integrity Board ("RIB") we will continue these teleconferences and will reassess the ongoing structure and support we need once we understand the new animal welfare role of the new RIB and its priorities. GRNZ has a number of recommendations on the new role of the RIB, including as discussed previously the establishment of a dedicated animal welfare committee.

Trainer education on health and welfare

GRNZ uses our website, publications, social media, conferences and online training to provide ongoing education and information to our trainers on health and welfare. At our conferences, topics have included the Code for Dogs and the Animal Welfare Act, track safety, animal injuries, eye problems in dogs, and the rehoming program. Our publications and information provided range from how to administer CPR in dogs to emergency preparedness - how to ready your kennels in case of emergency.

Rehoming

The review and improvements to the rehoming program was by far the most significant outcome from the Hansen Report. Please see the Rehoming Infographic which is attached as Appendix 1 which clearly identifies each step taken in relation to the greyhound's journey through rehoming.

Recommendations from the Hansen Report included that a stronger emphasis on rehoming was needed as well as better tracking of deregistered (retired) greyhounds. In 2018, our GRNZ "Great Mates" rehoming program ("rehoming program") was born.

GRNZ wanted to ensure it took responsibility of each greyhound and increasing its rehoming efforts without putting too much of a strain on our adoption partners, who at the time, were doing both the preparation for each greyhound as well as the adoption for each greyhound.

The idea for Great Mates was simple; Greyhound Racing New Zealand would take on the preparation of each greyhound allowing our adoption partners to solely focus on adoptions, expand our kennel bases to increase our rehoming capacity, and create an easy-to-use online deregistration system for trainers to ensure each deregistered greyhound was accounted for. The program was rolled out nationwide in August 2019.

As part of the program GRNZ covers the cost of any veterinary requirements, desexing, teeth etc, as well as any specialist re-training that a retired greyhound may need prior to its allocation to a rehoming agency. GRNZ endeavours to meet any requirements our greyhounds may have in order to be rehomed successfully without any economic, resource or time limit.

The program is supported by software for the management of the rehoming waiting list and the greyhounds in the rehoming kennels. This software is also used by our adoption agency partners.

For trainers, it is now 'business as usual' to retire their greyhounds to the Great Mates rehoming program. We have been tracking the number of greyhounds that are euthanised at "owner or trainer request" and this number has reduced from 219 in the 2017/18 season (before the rehoming program started) to 12 in the current season as of April 2021. Our goal is to have these euthanisations eliminated.

Since starting the rehoming program we have found that greyhounds have become very popular as pets.

Adoption Agencies

GRNZ has a relationship with a number of adoption agencies.

GRNZ is a major funder of these organisations as well as paying for all the health needs of the dog (e.g dental, desexing and any other issues). The dogs are also trained by behaviourists to ensure that they are matched properly. Behaviour assessments are provided to the adoption agencies to assist them in finding the right match for the dog. For example is the dog cat friendly, small dog friendly and child friendly and is there any ongoing medical care they will need and if so what cost is involved.

These agencies provide a very valuable service with their reach throughout New Zealand. We have appointed a Rehoming Manager to coordinate between GRNZ and the agencies.

Breeding

Dog breeding is calibrated to produce a managed and consistent volume that fluctuates slightly but is otherwise aligned to the racing volumes and rehoming capacity. Apart from 2016 where 1066 pups were born, the number of greyhounds born each season has been between 800 and 900 from 2013 through 2019. This matches the number of dogs required to maintain the industry at its current level. The capacity of the rehoming program was scoped to cope with this number of dogs entering the industry.

Year	Pups Born	
2013	848	
2014	815	
2015	875	
2016	1066	
2017	744	
2018	843	
2019	811	
2020	712	Covid
2021	649	YTD

As demonstrated by the consistent number of pups born each year there is no suggestion of overbreeding.

Following the Hansen Report, owners of breeding females must apply for permission to breed more than three litters or whelp a litter after reaching seven years of age. Exceptional producers or performers may make a written appeal to an expert panel of vets for a final fifth litter or final litter having turned eight.

Inspection and Audit

The RIU has followed the Hansen Report recommendation to make regular kennel inspections. Eight months into the current season they have inspected 117 of our 155 total kennels at least once, from 148 total inspections being undertaken this season in total. This results in 75% of our kennels already having been inspected this season.

In early March 2021 GRNZ trialled the Gallagher "smart" microchip reader which can instantly provide the operator with a greyhound's name. As well as introducing these for ID use at racetracks they should be of great assistance by making it more efficient for the RIU during their kennel inspections.

GRNZ has also commenced an annual greyhound audit, where trainers are asked to provide a status update on any registered dogs that raced last season but have not raced so far this season. Information provided on the greyhound is updated in our database to ensure that the records are complete and accurate. The annual greyhound audit works in parallel with the rehoming software by confirming the status of dogs that have not been retired.

Tracking of Greyhounds

GRNZ maintains a register of greyhounds and we have continued to enhance the tracking of greyhounds from birth to adoption in our database. Greyhounds are recorded in our database within fourteen days of being born (whelped), and from that point on the records about them are constantly updated. This includes deregistration and adoption information.

Our reporting tracks greyhounds that have not raced for a certain period of time and we follow up on these with the trainer. GRNZ keeps records of current and historical owners, trainers, partnerships, breeders, lessees and custodians of the greyhound. We also send

details about greyhounds and the trainers to the National Data Repository that is managed by Greyhounds Australasia.

Further detail is available in the Appendix 2.

Drug Testing

With the recent publicity in relation to a positive drug test in our sport it is important to provide some context on the Racing Integrity Unit's processes and results to date. All drug testing is conducted by the RIU independent of GRNZ.

Testing Results provided by Racing Integrity Unit:

Season	Tests	Positives
2018-19	3721	8
2019-20	3127	0
<u>2020-21</u>	<u>2521</u>	<u>3</u>
3yr Totals	9369	11

One of the issues which arises in drug testing in both horse and dog racing is the ease of which environmental contamination can occur with chemicals such as methamphetamine and codeine.

There is no evidence here of administration of a prohibited substance for performance enhancement to date. Environmental factors have been indicated as the source of the contaminations.

Conclusion

Thank you for the opportunity to update you and provide more detail in relation to GRNZ activities to constantly improve welfare outcomes. We welcome the review and look forward to working with you in the future.

There is a perception that greyhounds are an industry in decline. However recent indications actually point to greyhound popularity growing and this emphasises even more our commitment to animal welfare - we need to make sure that our systems and processes are able to accommodate this. The quarterly reporting will give us the opportunity to update you on our ongoing progress on the topics covered in this report and any others that you request.

We hope that this report will provide context and demonstrate the level of our transparency and identify that most concerns are either isolated or actively being addressed.

Yours sincerely

A handwritten signature in blue ink that reads "Glenda Hughes". The signature is written in a cursive style with a large initial 'G'.

Glenda Hughes
Chief Executive
Greyhound Racing NZ

A Greyhounds journey through rehoming

A large % of greyhounds who get rehomed are retired racers and a small % have never raced.



Update on Hansen Report Recommendations

Recommendation 1 - Finalise health and welfare standards

The Health & Welfare standards have been in place since August 2018. Advisories were provided to all licensed persons through our website, magazine and posters at racetracks.

All Licensed Persons were sent a physical copy of the new 'Health and Welfare Standards 2018' by early July 2018 as part of their licence renewal packs. In the process of renewing a licence, all Licensed Persons were required to sign a declaration that the applicant has read and understood the new standards. All applications for licences include a declaration that the applicant has read and understands the standards.

The standards are available on our website and in the Rules of Racing book sent to all LPs. These standards apply to all persons licensed by GRNZ who are responsible for the welfare of GRNZ registered greyhounds through to, but not including, the rehomed greyhounds after their retirement from all GRNZ activities. They apply to all greyhounds, including puppies and those retired from racing for breeding.

The standards cover:

- Food and water
- Greyhound facilities
- Exercise, equipment, training and training devices
- Socialisation and rehoming
- Transportation
- Breeding
- Health, prevention of infectious disease and injury, surgical procedures
- Live/dead baiting (banned)
- Euthanasia
- Fireworks

The standards also include an extract from the Animal Welfare (Care and Procedures) Regulations 2018 and reference information for other documents linked to the standards - Animal Welfare Act etc and where to find this information.

In September 2020 we updated the standards. We continue to monitor compliance to the standards through the RIU inspections and the provisions within the standards - e.g. breeding, health etc.

Recommendation 2 - Annual inspection of all kennels by RIU

This has been in place since the 2018/19 season. The RIU website states under their FAQ section - 8:

What processes are in place to ensure animal welfare? On Race days there is always at least one qualified Veterinarian present to inspect the horses and dogs, before, during and after racing. RIU stewards and Investigators also visit licenced

properties to ensure the welfare of the racing animals.
<https://www.riu.org.nz/contact-us/faq>

The GRNZ Rules of Racing 11.3(y) state that a steward

[has the power to] enter onto any land occupied by an Licensed Person for the purpose of conducting a kennel inspection...

GRNZ has continued to improve the information about licensed people and greyhounds that the RIU Steward has access to. For example, they use a report which shows all the information about the trainer, including their current and historical licences, judicial information and every greyhound currently owned, trained or administered by them that should be on the property they are inspecting. This includes puppies.

The RIU provides us with a summary of the number of kennels inspected, and advises GRNZ of any concerns or exceptions. We are able to obtain the inspection reports from the RIU if required. We also get the RIU signoff of inspection for new licence holders - e.g. becoming a trainer or breeder.

Recommendation 3 - Ongoing emphasis on new Health and Welfare Standards

Refer to 1 above. Also note that information from our vets is regularly published on our website. In the last two years this has covered topics such as:

- The heimlich maneuver and CPR in dogs
- Risks of heat stress during transport
- Emergency preparedness - how to ready your kennels in case of emergency (earthquake etc)
- Worming
- First aid and emergency care
- Kennel cough
- Tips on cleaning kennels
- Cutting toenails
- Interislander dog transport standards.

We have treatment record templates on the GRNZ website for the trainers and breeders to download and use. The vets on the track and the RIU monitor greyhounds for health and welfare - e.g. if a greyhound is sick, this is documented and the greyhound will be stood down from racing. The RIU in their kennel inspections check for health and welfare. GRNZ also has a Socialisation Policy for greyhounds and education material to support this.

Recommendation 4 - Ensure vaccinations of greyhounds are up to date by making them a pre-requisite for registration and racing

The policy was completed 1 August 2018 and took effect from 1 February 2019. The policy is clear on what vaccinations are required and when, and that proof of vaccinations must be provided to GRNZ from time to time. Proof of vaccinations is for the litter to be registered (prior to 4 months old).

Proof is also required at 16 months when the greyhound is named and registered to race. This proof is sighted by GRNZ staff and copies taken for the greyhound records. Treatment and vaccination records must be provided on request to GRNZ and/or the RIU.

Future actions

GRNZ are scoping the changes to the database required for the system to automatically manage some of the vaccination process - e.g. indication when vaccinations are due etc.

Recommendation 5 - If ear branding is required, anaesthetic must be used

Topical anaesthetic cream is used by ear branders since 16 May 2018. The GRNZ Chief Veterinarian identified an over-the-counter topical anaesthetic that could be used by all GRNZ ear branders. All ear branders are approved by GRNZ and go through suitable training to carry out earbranding.

Future actions

The Greyhound Australasia (GA) animal welfare committee is working on a formal process to eliminate earbranding. GRNZ is a member of GA.

Recommendation 6 - Establish separate register of breeding stock

This was completed in 2018. The Registering a Breeding Female policy was published on 1 August 2018 and amended 1 March 2019. This sets out that a breeding female (broodbitch) must apply to be registered and the criteria for registration. The policy also sets out when a broodbitch becomes inactive, and under what circumstances approval may be given for her to have more than 3 litters or be serviced over seven years of age. A broodbitch is issued with a special registration card that must be provided to a vet/stud master.

Changes to the GRNZ database were made to support the policy including a separate register of broodbitch and stud dogs being maintained; maintenance of the broodbitch registration and deregistration, including dates; ensuring the breeder has the correct licences; automatic maintenance of its status as active or inactive.

We have the concept of a custodian which is used if the broodbitch is not necessarily in the care of the breeder or owner (e.g. with a litter master). The changes also included recording the service method and the whelping method. All of this information is available on whelping reports and records of services etc.

A breeder can retire a broodbitch or stud dog as a pet when the time is ready.

Future actions

System changes are being scoped to make the broodbitch register available online for vets to access (rather than just GRNZ staff).

Recommendation 7 - GRNZ should track all greyhounds from birth to adoption

GRNZ has always maintained a register of greyhounds and we have continued to improve the tracking of greyhounds from birth to adoption in our database. In detail:

- In 2018 we made changes so that it was easier for trainers to deregister their greyhounds from racing by providing the capability to do this themselves online rather than filling in paper form, though that is still an option for them.
- At any point, we can look up a greyhound and determine information about it - e.g. who its owner is, or which rehoming kennel it is currently at.
- From birth, GRNZ require a return of whelping form that details how many puppies and of what sex are born. This is required within 14 days of whelping and the information is recorded in the database. At this point the puppies are registered as an animal in the GRNZ database, have a unique identifier assigned to them and the owner is recorded against the puppy. Earbrand numbers are generated for the puppies in the litter so that when they are earbranded, the earbrander knows which IDs to use.
- Prior to 16 weeks of age the information in the database is updated with details on the colour of the greyhound, markings, its confirmed earbrand and microchip number. Records are also kept of the vaccinations.
- Puppies can be registered for naming prior to 16 months old. Names are approved by Greyhound Australasia. The information is updated in the GRNZ database. At any time after 16 months old the greyhound can be registered for racing.
- At all points along this process from birth to adoption, the GRNZ database is updated with the information and this information is available in a number of reports.
- GRNZ keeps records of current and historical owners, trainers, partnerships, breeders, lessees and custodians of the greyhound.
- When a greyhound is retired it can be retired as a pet, or retired for breeding (or exported). GRNZ keeps records of all of this information and records the details of the new owner if the greyhound is privately rehomed. Information is recorded and reported on that includes which adoption agency has rehomed the greyhound after it has been through the GRNZ rehoming programme.
- GRNZ maintains injury and death and euthanasiation information for each greyhound
- GRNZ is continuing to improve its tracking capability - for example more reporting on greyhounds that have not been registered for racing, but not retired either.

Future actions

We are including the licensed people that rehabilitate injured greyhounds as a rehabilitation entity in the GRNZ Database so that if a greyhound is being cared for as it recovers from an injury we know where that greyhound is.

Recommendation 8 - RIU kennel inspections should audit greyhounds against the database

This has been in place since 2018. To assist the RIU, they are able to obtain a report from the GRNZ database, that for each trainer includes the dogs trained, dogs owned, dogs managed or administered, and the training location. Each greyhound on the report lists the name, earbrand, microchip, who the owner/trainer is of the dog. Also on the list are the

unnamed puppies. The RIU steward has a microchip scanner so is able to scan each dog and check the details against the report. They can also enter the microchip number in the database to identify the dog as well.

Recommendation 9 - Private adoptions should be subject to an audit

Audits commenced in 2018/2019 season. Greyhounds that are privately rehomed or kept by owner are processed by the GRNZ rehoming kennels. This ensures that we can confirm the greyhounds temperament and that it has been desexed. For greyhounds that are privately rehomed we contact the new owner for verification.

Recommendation 10 - Greyhounds should be de-sexed as part of deregistering

This has been standard practice prior to the Hansen report. All greyhounds that are retired from racing (or breeding) as a pet to the GRNZ Greatmates rehoming programme are desexed. This is either done by the trainer or done on entry into the GRNZ Rehoming kennel.

Recommendation 11 - GRNZ to ensure greyhounds are also registered under the territorial authority

This is in place but progress is being made to have racing greyhounds reclassified as working dogs.

When greyhounds are retired to the GRNZ GreatMates rehoming programme, GRNZ arranges for the territorial authority registration to be transferred as required - i.e. if the dog is at our Levin kennels, the greyhound will be registered with the Horowhenua District Council.

Recommendation 12 - All dogs, not just racing dogs, must be tracked in the GRNZ database and kept in the care and control of a licensed person

New Rules were introduced in August 2018 (Rule 85.1). In addition, refer to 6 & 7 above in regards to the information kept about greyhounds.

GRNZ also has introduced the concept of a custodian and parent custodian - for example, if a trainer has retired a greyhound as a pet to the GRNZ GreatMates rehoming programme, while the dog is on the waiting list and still living with the trainer, the trainer is classed as the Custodian of the dog (as they aren't training it anymore). When the dog goes to the GreatMates kennel facility, the kennel is listed as the parent custodian and if it changes location (e.g. goes to the prison programme) the prison is listed as the custodian. Note that the managers of the three GRNZ GreatMates rehoming kennels are licensed people.

Recommendation 13 - Introduce a rule to make it mandatory to seek approval before euthanasia

A Rule allowing GRNZ to establish euthanasia policy was put in place 2018.

The Rules of Racing, the Health and Welfare Standards, the GRNZ Veterinary Certificate of Death Policy, and the Greyhound On-Track Euthanasia Guidelines all have the aim of minimising euthanasia of greyhounds, and detail the documentation required if a greyhound dies or is euthanised.

Note that a person who knowingly participates in causing the unnatural death of any greyhound, other than by accepted euthanasia by a Veterinarian is subject to a fine of up to \$10,000 and/or permanent disqualification from involvement in any way in greyhound racing.

Recommendation 14 - Expand racing opportunities to extend the racing careers of greyhounds

Additional races have been programmed every year since the Hansen report. There were 529 extra races in 2018/19. Covid-19 impacted the number of races in the 2019/20 season, but we have increased the number for the 2020/21 season. We continue to work with the TAB Dates Committee to maximise racing opportunities.

Recommendation 15 - Expand Rehoming operation

The GRNZ GreatMates rehoming has been operating from our three centres and there are four adoption partners working with us.

A second prison has been added to the prison programme, and we also have the ability to find forever homes for greyhounds that the adoption agencies haven't found homes for.

Since the GRNZ programme has been running, no greyhounds in the programme have been euthanised because they couldn't find a home.

In May 2020 the software to support the rehoming operation was implemented which provides for the management and tracking of the greyhounds from the time they are retired as a pet to when they are adopted out by an adoption partner. GRNZ has introduced a Socialisation Policy with one of the aims being to increase the number of greyhounds that successfully transition to becoming a pet.

Future actions

We are in the process of establishing a fourth GRNZ GreatMates rehoming centre. This will be located in Christchurch and will double our capacity in the South Island.

Recommendation 16 - Use education to keep dog numbers to a level that can be rehomed

A restriction on the numbers of imports of greyhounds into New Zealand has been in place since 2018. A person wanting to import a greyhound into New Zealand must apply for

approval and this is not guaranteed. GRNZ only approve a maximum number of 20 per month, and a maximum of 5 per training facility per month.

Breeding restrictions mean that a broodbitch can (generally) have a maximum of 3 litters. As noted above, the education around socialisation of puppies, apart from being a good welfare practice, is designed to increase the rehoming opportunities.

Recommendation 17 - Euthanasia due to racetrack injuries to be made public in Stewards' Reports

This has been in place since December 2017.

Recommendation 18 - Trainers must report injuries to greyhounds

The new injury reporting rule was introduced in August 2018. This Rule (56.11) was added to Rule 56 Greyhounds Suffering an Injury or Illness.

Recommendation 19 - GRNZ to keep track of greyhounds' veterinary care records

Treatment and vaccination records must be provided on request to GRNZ and/or the RIU. Post race injury reporting rule in place as of August 2018.

Future actions

GRNZ are scoping the changes to the database required for the system to automatically manage some of the vaccination process - e.g. indication when vaccinations are due etc.

Recommendation 20 - Improve safety of racetracks

A Massey PhD study was commissioned to investigate risk factors relating to track injuries. This study is nearly complete.

We have an extended arm lure in place at Addington and are working on the roll out of these to other tracks. The sprint boxes redesigned at Palmerston North.

We have contracted a specialist track advisor who is able to direct improvements to tracks that are needed. On his advice and design, special track groomers are being delivered.

Sand is being replaced at Addington and sand top ups done at Manukau and Whanganui with starting mats replaced.

The RIU Stewards inspect the tracks for safety each raceday and have the power to order the meeting to be abandoned if the track is unsafe. GRNZ continues to monitor injury reports for track injury trends.

Breeding Timeline

Conception to Raceday

Before performing any breeding tasks, your Owner and Breeders Licences must be current. Please keep in mind that your female greyhound must also be registered with GRNZ as a Breeding Female prior to service.

For further information see the [GRNZ Breeding Female Policy](#) and the [GRNZ Health and Welfare Standards](#).

All forms can be found at: grnz.co.nz/about-nzgra/fees-and-forms

Before Service

After Service

After Whelping

1



Process DNA your Breeding Female

When
Before registration

Form
Call GRNZ to request a form/kit be sent to your nominated vet

Fee
\$225 one-off fee*

2



Process Register your Breeding Female

When
Before servicing a greyhound

Form
Register a Breeding Female

Fee
\$50 one-off fee*

3



Process If using frozen semen, ensure the straw is in the name of the breeder

When
Before servicing

Form
Greyhounds Australasia Application to Transfer the Ownership of a Frozen Semen Breeding Unit

Fee
\$80*

4



Process Notify GRNZ of the service

When
Within 14 days of the service

Form
Register a Service - Natural
Register a Service (ESI)

For FS services the vet will give you a GA Service Notice that needs to accompany the *Register a Service (ESI)* form

Fee
\$50 natural service*
\$80 frozen semen service*

5



Process Notify GRNZ of the result of the service

When
Within 14 days of the whelping date, or in the event of a miss within 14 days of the expected whelping date

Form
Result of Whelping Form

This form is generated by GRNZ and posted to the breeder or custodian upon receipt of payment for the service

Fee
No charge

6



Process Vaccinate the puppies

When
At 8 weeks of age

Form
Record in the Vaccination book

Fee
Fee varies - payable direct to your vet

7



Process Earbrand / microchip the puppies

When
10 weeks old is ideal

Form
The *Earbrand Advice* is sent by GRNZ to your nominated earbrander upon receipt of the Result of Whelping

Fee
Fee varies - payable direct to your earbrander

8



Process Vaccinate the puppies

When
12 weeks of age vaccinations
These vaccinations are required as part of the litter registration.

Form
Record in the Vaccination book

Fee
Fee varies - payable direct to your vet

9



Process Register the litter

When
Prior to 4 months old

Form
The *Litter Registration Form* is sent to the earbrander with the Earbrand Advice and should be returned to GRNZ as soon as the earbranding and microchipping has been completed.

Fee
\$50 per puppy*
\$500 fee for registrations received after the litter turns 4 months old*

10



Process Vaccinate the puppies

When
16 weeks of age

Form
Record in the Vaccination book

Fee
Fee varies - payable direct to your vet

11



Process Vaccinate the puppies

When
1 year after the final puppy vaccinations

Form
Record in the Vaccination book

Fee
Fee varies - payable direct to your vet

12



Process Register to race

When
Any time after 16 months old

Form
Registration of Name

This form is sent to the breeder upon receipt of payment for the litter registration

Fee
\$50 per greyhound*

Please ensure your paperwork is complete and submitted on time. Late fees may result if forms are late.

*Fees subject to change

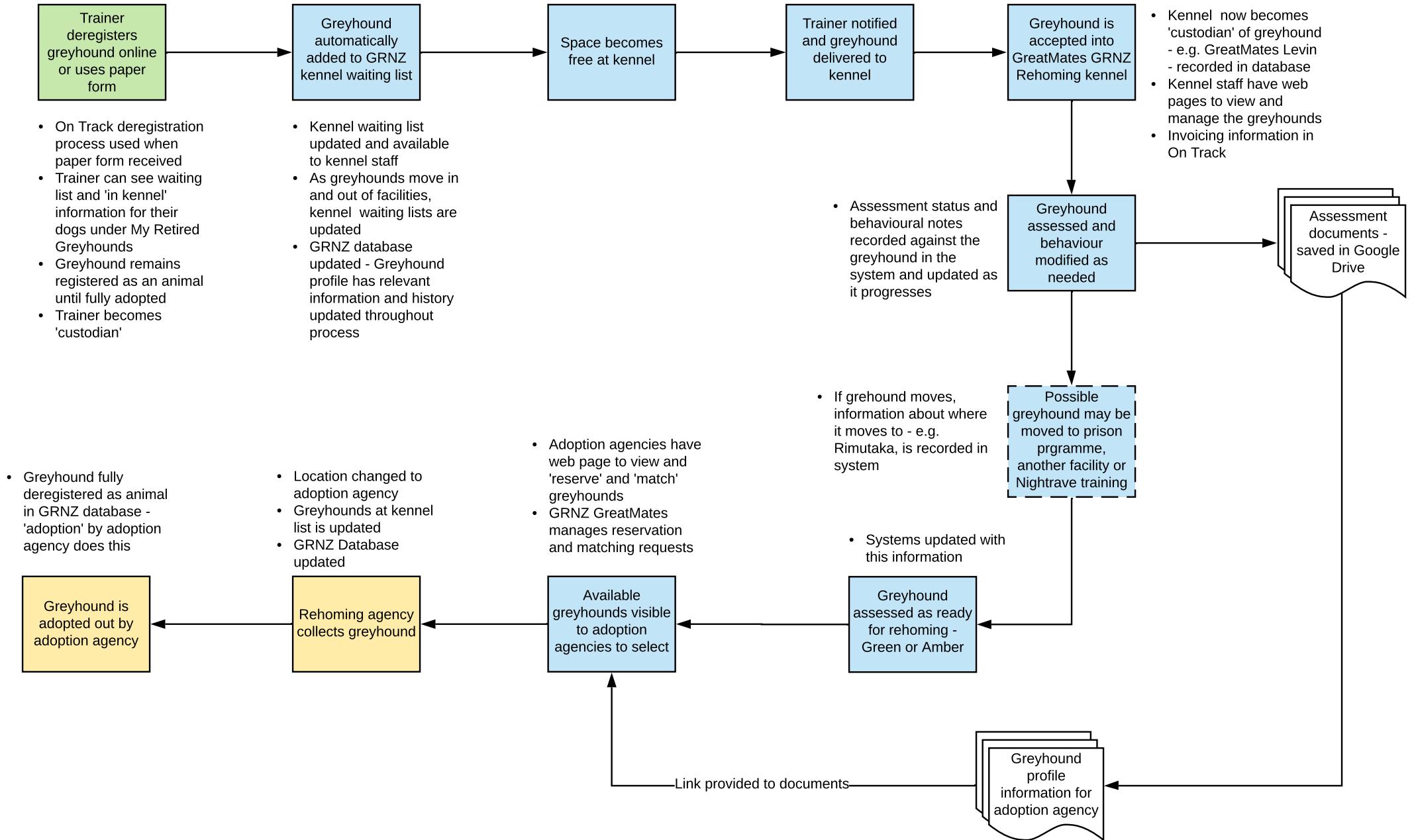
Decline in Number of Greyhounds Euthanised whilst in care of GRNZ Licensed Persons

Annual	2017_18	2018_19	2019_20	2020_21 9 Months
As a Result of Injury in a Race	60	59	34	23
Accident/Injury/Illness/Dangerous	126	55	93	65
Owner/Trainer Choice	219	227	83	12
Aged Pets	6	13	15	7
Annual Total	411	354	225	107

Died of Natural Causes (very young, very old, illness)	82	66	47	22
--	----	----	----	----

Six Monthly	2017_18		2018_19		2019_20		2020_21	
	Aug-Jan	Feb-Jul	Aug-Jan	Feb-Jul	Aug-Jan	Feb-Jul COVID	Aug-Jan	Feb-Apr 3 Months
As a Result of Injury in a Race	32	28	26	33	17	17	22	1
Accident/Injury/Illness/Dangerous	66	60	35	20	55	38	52	13
Owner/Trainer Choice	103	116	113	114	56	27	11	1
Aged Pets	2	4	6	7	10	5	6	1
Six Monthly Totals	203	208	180	174	138	87	91	16
Annual Totals	411		354		225		107	

Rehoming process - system detail



Report Name	Location	Parameters	Information provided
Animal grading check report	Admin	Club/meeting	Greyhound grading - if stay the same or upgraded or downgraded depending on their race result
Animal grading issues report	Admin	Club/meeting	Greyhound name with dates for cutOff Old and CutOff New
Judicial statistics	Admin	Date range/trainer	Information about fines, suspensions for breach of rule
Lease expiry	Admin	Date range	Greyhounds with dates their lease expires and owner/lessee informaion
Licence cards by registration by date	Admin	Date range	PDF of the licence card so can be printed on the actual cards - for entities (trainers, owners, breeders etc)
Licence cards by registration by person	Admin	Entity	PDF of licence card for the entity (trainers, owners, breeders etc)
Licences for Australian based owners	Admin	-	Historical and current info re Australian owners including Australian ID, stats on dogs owned and raced
Licensed persons mailing list	Admin	-	Every licensed person with their details including licences held
Magazine labels	Admin	-	Labels for those people who are posted the magazine
People extract	Admin	-	Information about every person in our database
Unlicensed people	Admin	Season	Entities - partnership or syndicate that have members not properly licensed - e.g. missing owner
Unplaced runners	Admin	Date range	List of dogs unplaced with finishing position in each race in the date range. Owner listed also
Club nominations by meeting	Clubs	Date range	List of meetings for the date range and the total nominations and total online nominations
Runners Index	Clubs	Season/Club/Meeting	Dog name (alphabetical order) and race, Meeting details, animal ID and race number (run together), Race name, animal, Race ID, total
Trainers Index	Clubs	Season/Club/Meeting	Trainer (alphabetical order), location, dog and race, Meeting details, animal ID and race number, Race name, animal, race ID
Animals registered by date	Dog welfare	Date range	Detailed information for each greyhound that has been registered in the date range, including breeding, owner, trainer, breeder and registration date. Also includes date of first trial, first and last race, and racing and animal deregistration dates and status, reason
Breeding statistics	Dog welfare	-	Number of dogs whelped by month and season. Includes number microchipped, registered, trialled, raced, deregistered, number litters whelped, number litters microchipped, number died, number euthanised, number retired as pets from the number that are whelped each month.
Dog incidents	Dog welfare	Date range	Dog injuries and euthanisations that have happened at the track. Includes, Race Date, Track, penetrometer reading, race information, place on track of inury, dog details including trainer, date whelped, box number, weight, grade. Part of dog injured, affected area, when it occurred and cause and description of injury. Lameness grade, number days stood down. If died/euthanised includes this information also.
Entity dogs owned	Dog welfare	Entity	The list of greyhounds owned by the entity - either outright or in partnership or syndicate. Includes dog details - name, earbrand, microchip, birthdate, date of death and ownership valid from and to.
Entity groups	Dog welfare	Entity	List of entity groups that the entity is a member of, with their role, valid from/to and shares
Exported dogs	Dog welfare	Date range	Dogs that have been exported and where to. Includes date, dog information, last trainer and last owner
Greyhound check injuries	Dog welfare	Date range	Dogs that have been stood down - includes track name, trainer, dog name, valid from/to and reason. Most reason's are injuries, some because in season, marring etc
Greyhound check lifecycle	Dog welfare	-	The list of dogs that haven't been registered for racing - includes earbrand, microchip and whelping date. i.e. unnamed
Greyhound check racing	Dog welfare	From date	Dogs that have not started since the 'from' date. Includes greyhound data, trainer information, last race date and if been injured and stood down
Greyhounds euthanised and died	Dog welfare	Date range	List of dogs euthanised or died during the time period. Includes reason, birthdate of dog, last trainer and last owner
Named (Imports)	Dog welfare	Date range	Details of dogs imported into NZ in the date range. Includes where from, the owner, who imported it and when.
Named (NZ Dogs)	Dog welfare	Date range	An alphabetical list of dogs with all their information, trainer, status etc.

Report Name	Location	Parameters	Information provided
NZ Imports	Dog welfare	Date range	Similar to Named (imports) but only has the dog ID, greyhound name, earbrand, birth country and race registration date - which is within the date range specified
Racedogs by grade	Dog welfare	-	A list of how many dogs are in each grade - e.g. 719 Grade 1 SprintMiddle
Animal standown	Dogs	Date range and dog name	List of the standowns the dog has had for the date range. Includes rule, Club, race, reason and dates valid from/to
Category points standings	Dogs	Season	Racedog standings
Dogs grade by area	Dogs	Date range	Number of dogs in each region at each grade as at the date range
Dogs by trainer	Dogs	Trainer	List of dogs (animal ID, earbrand) the trainer has at each training location
Dogs Downgrade	Dogs	Season/Club/Meeting	Dogs downgraded since last start for [Meeting and date of meeting]. Shows Dog name, type, previous grade, last start, previous grade include out of nom, last start date include out of nom, grade
Greyhounds of the month points	Dogs	Date range	Points that the greyhounds have earned in the period defined
Greyhound if the year by stakes	Dogs	Season	Greyhounds and stakes earned in order from top. Includes sire and dam of the dog
Racing Rules	Dogs	Date and trainer	List of dogs with racing information and the number of days between starts if range 24hr to >2
Registration cards by registration by date	Dogs	Date range	Greyhound registration cards - PDF for the date range specified. Includes name, earbrand, microchip, whelped, colour, sex, sire, dam, distinguishing features. Used to print the actual cards
Registration cards by registration by dog	Dogs	Dog name	Registration card for the dog requested. Details as above.
Registration of litter	Dogs	Date range	List of greyhounds from litter that have been registered for racing. Racing registered date and whelping date. Displays litter number, dam, sire, breeder and earbrand and microchip. Also displays the number of females and males born
Registration of service	Dogs	Date range	List of services in the date range. Includes date of service, dam, sire, FSI straw ID/or fesh semen (if AI) breeder and method of service
Result of whelping	Dogs	Date range	Outcome of whelping report. Includes, whelping date, dam name, dam ID, dam birth, sure name, sire ID, sire birth, FSI straw ID, breeder, method, how many male and female puppies born
Dogs of meeting	Meeting	Season/Club/Meeting	Race, Box (in order) dog ID, dog name, earbrand, microchip
Results checklist	Meeting	Season/Club/Meeting	Race result information - used by racing team
Stewards Report	Meeting	Season/Club/Meeting	Stewards report
Nominations by dog	Nominations	Greyhound and date range	List of nominations the dog has had in the date range. Includes date, venue, race type, distance, grade, nomination type (e.g. internet), trainer, preference
Box draw	Race Day	Date range	Information about the box draw for each meeting and race, including who did the draw in the system
Box draws by trainer	Race Day	Date range and trainer	For the date range the race and box draw the dog (named) was in and its placing in the race
Draw sheet	Race Day	Season/Club/Meeting/Day	All the details including dbls, trbs, and quads, kenneling time, race, time, name, stake, distance. Form information, weight, dog name, trainer,
Event duplication	Race Day	Season/Club/Meeting	Dogs nominated for more than one event at the meeting - Pref, Dog name (alphabetical), Type, Distance, Grade
Field and Noms duplication	Race Day	Date (can only be today's date)	Dogs in fields on [date] or [date + 1] and nominated for the following [day] the [date + 5]. Dog name (alphabetical), grade, distance, meeting name and date
Gear changes for fields	Race Day	Season/Club/Meeting/Day	All the greyhounds with gear - e.g. strapping, and any changes from last time. Includes race and number
No Race	Race Day	Season/Club/Meeting/Day	Rollover report of dogs nominated for [meeting and date]. More than 1 miss. Has dog name (alphabetical order), venue, race date, noms close date and time, Trainer name
Nomination checklist	Race Day	Season/Club/Meeting/Day	Nomination errors report. Contains summary. List of Standdowns - dog name on when on standdown to. Licence errors. Grade errors - name of dog - what their grade is and that cannot be nominated for a particular race. Report data is type, dog, race name, class, distance, grade, preference, trainer and created by

Report Name	Location	Parameters	Information provided
Nominations in multiple events	Race Day	Season/Club/Meeting	Dogs nominated for more than one event at the meeting - Pref, Dog name (alphabetical), Type, Distance, Grade
Owners and Trainers Duplication	Race Day	Season/Club/Meeting/Day	Field duplication report. For each race [name] lists dogs with duplicate trainers in the race and dogs with duplicate owners in the race; and partnerships & syndicate Owner members. Format - race name; Grade, dog, class, distance, trainer, owner/member. If there is no race name it lists the Race class and distance - e.g. C1 295 and all the dogs nominated for that class/distance
Pre-Race standdown	Race Day	Season/Club/Meeting	Stewards report - pre-race standdowns for the meeting. Race, dog name, trainer (name, phone and email), days - number and date range, reason, scratched - Y/N, stewards comments
Raceday scratchings	Race Day	Season/Club/Meeting	List of greyhounds that have been scratched in the meeting - includes race and box and trainer name
Dogs graduating to green assessment status	Rehoming	Date range	Report on number of dogs that started assessed as Red and went to Green, started Amber and went to green and started pending assessment and went to green. Includes count, percentage and average days between statuses
Dogs privately rehomed or kept by owner by kennel	Rehoming	Date range	Number of dogs privately rehomed or kept by owner by kennel - number and percentage - for the date range
Dogs rehomed by agency	Rehoming	Date range	Count of dogs rehomed by each adoption agency for the date range. Includes percentage
Dogs rehomed by agency by kennel	Rehoming	Date range	Count of dogs rehomed by each adoption agency and kennel for the date range. Includes percentage
Dogs rehomed by kennel	Rehoming	Date range	Count of dogs rehomed by each kennel for the date range. Includes percentage
Initial assessment status	Rehoming	Date range	Count of dogs at green, amber and red when they have their first assessment. Includes percentage
Abandoned races	Stats	Date range	Lists the races that have been abandoned in the date range. Includes detail of club, race number and name, class, distance etc
Greyhound deregistrations	Stats	Season	Count of all deregistration statuses - i.e. retired as a pet, euthanised, retired for breeding etc and the reason - e.g. accident, natural causes etc
Race breakdown by area	Stats	Date range	Shows track, total races, then how many sprint, middle distance etc and classes, R/A races for the date range specified for each track
Race stakes by track	Stats	Date range	Stakes by track broken down by number NZ winners, number Australian winners, stakes NZ and AU dogs, and then by class for the date range.
Starters by venue	Stats	Date range	For each track number of starters and number of starts for the date range
Trainer stakes	Stats	Date range/trainer	Number of animals, starts, wins, seconds, thirds and unplaced and stakes won for the date range
Trainer stakes by starter	Stats	Date range/trainer	Breakdown of each starter and stakes earned - date, club, race, class, distance placing and \$
Bars and warnings	Stewards	Season/Club/Meeting	For dogs that are starting on the raceday selected, detail of previous bars, warnings and comments (relating to the trainer)
Dogs not nominated for 30+ days	Stewards	-	This is all the information about greyhounds that have not raced for more than 30 days. Includes number of days since last raced, and also stand down and injury information.
Gear changes - by meeting	Stewards	Season/Cub/Meeting	Gear changes for nominated dogs for the meeting date. Only shows if there is a change
Interim Person	Stewards	Entity	All the information we have about the entity - usually used for trainers. Includes name, address, contact details, current and historical licences held, judicial details (fines etc), dogs trained, dogs owned, dogs managed or administered, training location. With that dog information includes name, earbrand, microchip - if trainer who the owner is, if owner who the trainer is and if managed/administered who the owner and trainer are. Also in the list are puppies - not named
Penalty report - Rule	Stewards	Date range	List of dogs and stand down details including reason. Trainer info also included
Penalty report entities - full history	Stewards	Entity	All the details of the penalties that have been incurred by the entity (trainer, owner etc)
Penalty report entities - last 12 months	Stewards	Entity	All the details of the penalties that have been incurred by the entity in the last 12 months

Report Name	Location	Parameters	Information provided
Penalty report trainers at meeting - full history	Stewards	Season/Club/Meeting	All the penalty information for trainers that are appearing at the race meeting
Penalty report trainers at meeting - last 12 months	Stewards	Season/Club/Meeting	All the penalty information for trainers in the last 12 months that are appearing at the race meeting
Pre-race dog injuries	Stewards	Season/Club/Meeting	All the dogs in the meeting with information about all past (if have had) standowns due to injuries, illness, not presented etc
Vets	Stewards	Season/Club/Meeting	Dog name, description of injury, part of dog injured and standdown days from the meeting
Statistics	Publications/Masterfile	Date range	Full statistics about race meeting in the date range - race type, distance etc, placings, stakes etc